

# manooove

thintronic

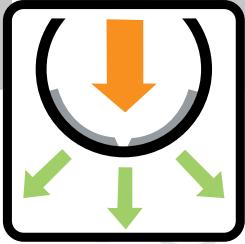
THE MISSING LINK  
THE MISSING LINK IN YOUR BOOTS



take  
good  
care and  
have a  
pleasant  
ride

manooove  
manooove  
manooove

# manoeuvre



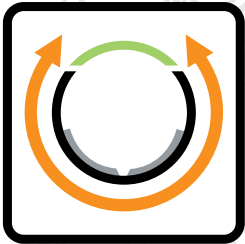
## More control

The padding in the pressure zone generates stable sideward power. Steering and fast curve changing will improve.



## More grip

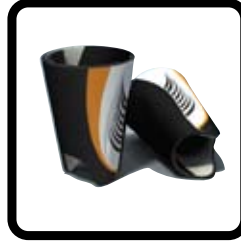
The momentum of the boot will be higher (A). Canting on the piste and steering in powder snow will be more direct.



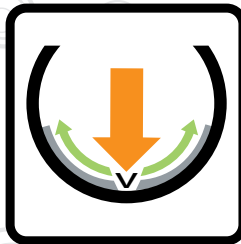
## More power

Improved fixation connects the leg more firmly with the boot. Your gain is; Smoother power distribution and less heel lift.

## Shintronics advantages



This unique sporting device for skiers and boarders deals with two major problems in the snow-sport: Comfort and Grip. Wear the Shintronics over your ski socks and enjoy the new level of comfort. The ergonomics of the Shintronic actively eliminates pain. Use the Shintronics and experience the better grip and the ease of control. Your level of skiing or riding will improve significantly. Shintronics are made of flexible, durable and shock absorbing neoprene.



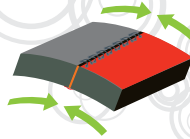
## No pain

Anatomical padding relieves pressure at the shinbone. Experience all day pain-free runs at all levels.

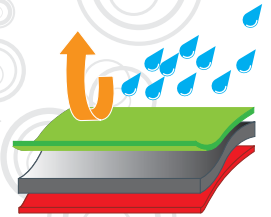
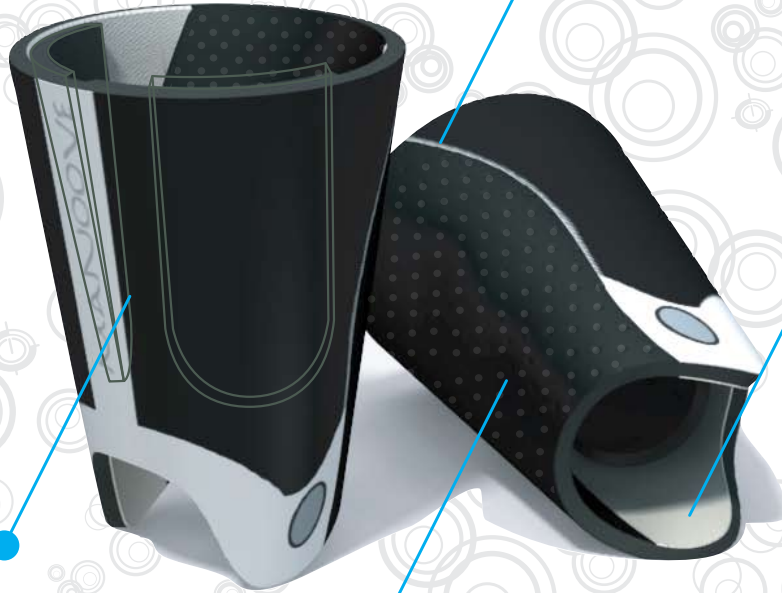
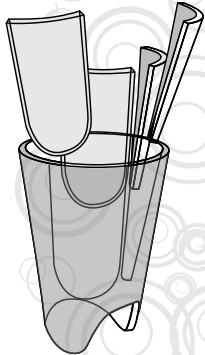
manoeuvre  
manoeuvre  
manoeuvre

# manoeuvre

V-Shape ergonomy  
*transfers power* from  
the shin to a wider area

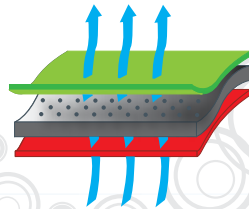


Soft damping  *durable*  
 *neoprene* with strong glued  
and blind stitched seams.



Comfortable  
super soft  
 *plush lining.*

Two adjustable  
neoprene  
 *PADDINGS* for high  
comfort, pressure  
relief and direct  
steering.



Breathable  *AIRPRENE* back panel.

manoeuvre  
manoeuvre  
manoeuvre

# manoove

User information - Gebrauchsanleitung - Información para el usuario - Notice d'utilisation - Informazioni per l'utente - Gebruiksaanwijzing



(GB) Shintronics are designed as a pair. Check for left and for right.

(G) Shintronics sind paarweise erhältlich. Prüfen Sie rechts und links.

(I) Gli Shintronic sono stati disegnati per essere utilizzati insieme. Controlla qual è la destra e qual è la sinistra.

(F) Les Shintronics sont conçus en paires. Il y a donc une partie gauche et droite.

(ESP) Los Shintronics se han diseñado formando un par. Verifique cuál corresponde a la izquierda y cuál a la derecha.

(NL) Shintronics zijn als paar ontworpen. Kijk even goed wat rechts en wat links is.



(GB) Wear your normal ski socks underneath.

(G) Tragen Sie Ihre normalen Skisocken.

(I) Indossa i calzettoni da sci oppure.

(F) Les Shintronics se portent au-dessus de vos chaussettes de ski ordinaires.

(ESP) Debajo puede utilizar sus calcetines.

(NL) Draag je gewone skisokken of probeer Manoove shin rash guards.



(GB) The paddings are detachable and adjustable. We recommend the marked area.

(G) Die Polsterung kann abgenommen werden. Wir empfehlen des markierten Bereichs.

(I) Le imbottiture sono staccabili e regolabili. Ti raccomandiamo l'area contrassegnata.

(F) Les rembourrages sont amovibles et ajustables. Nous vous conseillons la zone indiquée.

(ESP) Las almohadillas son desmontables y regulables. Recomendamos la zona marcada.

(NL) De vuilstukken kunnen losgemaakt en verplaatst worden. Wij adviseren het omliggende gebied.



(GB) Shintronics are unisex, there is no distinction between men and women models.

(G) Shintronics sind sowohl für Männer als auch für Frauen geeignet.

(I) Gli Shintronic sono unisex, non c'è differenza tra i modelli da uomo e quelli da donna.

(F) Les Shintronics sont unisexes. Aucune distinction n'est opérée entre les modèles hommes et femmes.

(ESP) Los Shintronics son unisex, no existe diferencia alguna entre los modelos masculino y femenino.

(NL) Shintronics zijn unisex, er is geen onderscheid tussen een mannen en vrouwen model.



(GB) Wear the Shintronics over your socks with the top section out of your boots.

(G) Tragen Sie die Shintronics über Ihren Socken, sodass die Oberseite aus Ihren Stiefeln herauschaut.

(I) Indossa gli Shintronic sopra i tuoi calzettoni da sci con la parte superiore che fuoriesce dagli scarponi.

(F) Portez les Shintronics au-dessus de vos chaussettes, la section supérieure dépassant de vos bottines.

(ESP) Utilice sus Shintronic por encima de los calcetines de forma que la parte superior sobresalga de las botas.

(NL) Draag de Shintronic over je skisokken. Het bovengedeelte steekt boven je schoen uit.



(GB) The correct location is on the middle of your shinbone.

(G) Die richtige Position ist in der Mitte ihres Schienbeins.

(I) La giusta posizione si trova a metà della tibia.

(F) L'emplacement correct est au centre de votre tibia.

(ESP) La ubicación correcta es en la mitad de la tibia.

(NL) De goede plaatsing is op het midden van je scheenbeen.



(GB) The Shintronic fits in ski boots and in snowboard boots. Close the boots normally.

(G) Shintronics sind für alle gängigen Ski- und Snowboardstiefel geeignet. Schließen Sie die Stiefel wie gewöhnlich.

(I) Gli Shintronic sono adatti a tutti gli scarponi da sci ed agli scarponi da snowboard. Chiudi gli scarponi normalmente.

(F) Les Shintronics se glissent dans les bottines de ski et de snowboard. Fermez normalement les bottines.

(ESP) Los Shintronics encajan perfectamente tanto en las botas de esquí como en las de snowboard. Cierre las botas normalmente.

(NL) De Shintronic past in skischoenen en in snowboard schoenen. Sluit de schoen normaal.



(GB) Careful hand wash only. Use hand warm water (40°C) with a little bit of soft soap.

(G) Handwäsche. Verwenden Sie lauwarmes Wasser (40 °C) mit ein wenig sanftem Waschmittel.

(I) Lava con cura solo a mano. Utilizza acqua calda (40°C) con un po' di sapone neutro.

(F) Lavez soigneusement vos Shintronics à la main uniquement. Utilisez de l'eau moyennement chaude (40°C) avec une noisette de savon mou.

(ESP) Lavar a mano. Emplee agua caliente (40°C) con un poco de jabón suave.

(NL) Handwas. Gebruik handwarm water (40°C) met een beetje zachte zeep.

We do not bear any kind of responsibility related to your snowsport capacities or related to the risks you undertake when practising snowsport.

The Shintronic is not a device to avoid bone fractures or to avoid other injuries. You as an individual will always be responsible for the risks you undertake when using the Shintronic.

manoove  
manoove  
manoove

# manoove

